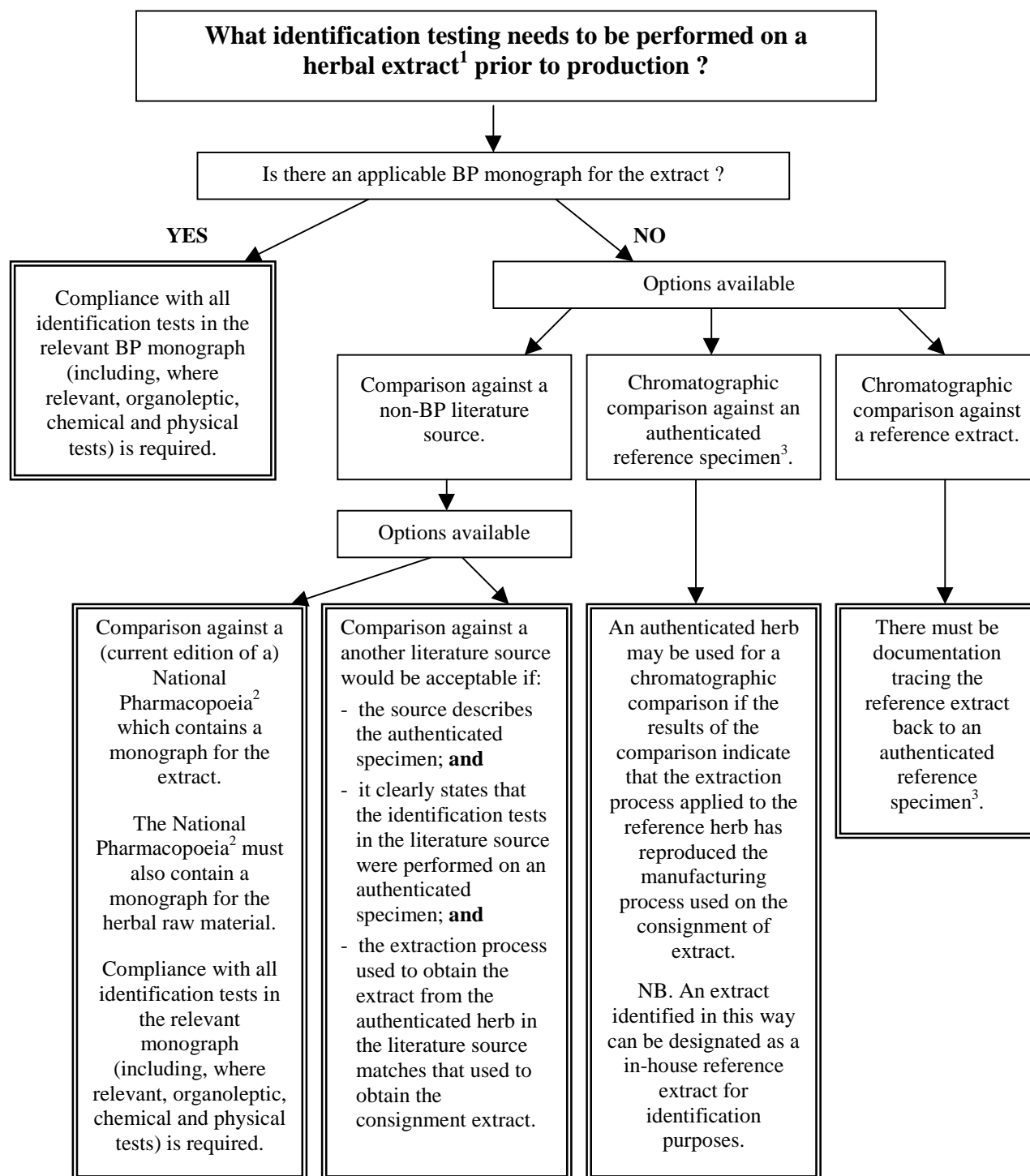


Flow Chart: Identification of Herbal Extracts¹

(this does not replace the need to comply with relevant statutory requirements)



¹ For the purposes of this flow chart, tinctures, expressed juices and exudates are also included in this definition.

² National Pharmacopoeias include the European, United States (of America), Chinese, German, Indian, Japanese etc. The pharmacopoeias must be issued by or endorsed by the relevant government authority. (Note that the word 'pharmacopoeia' in the title of a text does not mean it is a government-endorsed text). Sponsors should contact the Office of Complementary Medicines (OCM) if they are unsure as to the suitability of a pharmacopoeia.

³ A herb evaluated and certified by a suitably qualified person. NB. The morphological examination must be performed by a person qualified in the field of botanical authentication. Qualified persons may or may not be independent of the manufacturer.