

CLEAN COPY

ATTACHMENT

VIAGRA PRODUCT INFORMATION**VIAGRA[®] TABLETS**
(sildenafil citrate)

Nitrates and VIAGRA must not be used concomitantly (see CONTRAINDICATIONS).

VIAGRA is contraindicated in men for whom sexual intercourse is inadvisable due to cardiovascular risk factors (see CONTRAINDICATIONS and PRECAUTIONS)
--

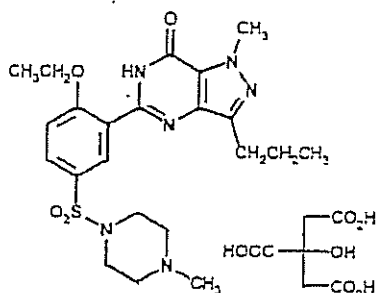
DESCRIPTION

Sildenafil citrate is an orally-active selective inhibitor of cGMP - specific PDE5 (phosphodiesterase type 5) which is the predominant PDE isoenzyme in human corpora cavernosa.

Sildenafil citrate is 1-[4-ethoxy-3-(6,7-dihydro-1-methyl-7-oxo-3-propyl-1H-pyrazolo[4,3-d]pyrimidin-5-yl)phenylsulphonyl]-4-methylpiperazine citrate. CAS number 171,599-83-0.

The empirical formula for sildenafil citrate is $C_{22}H_{30}N_5O_4 \cdot C_6H_8O_7$

Sildenafil citrate has the following structural formula:-



Sildenafil citrate is a off-white, crystalline powder with a molecular weight of 666.7. Its aqueous solubility is equivalent to 2.6 mg sildenafil per mL at 25°C.

In addition to sildenafil citrate, each VIAGRA tablet contains the following inactive ingredients: - microcrystalline cellulose, calcium hydrogen phosphate anhydrous, croscarmellose sodium, magnesium stearate, hypromellose, titanium dioxide, lactose, glycerol triacetate, indigo carmine aluminium lake (CI 73015). Viagra tablets may contain PF0102.

PHARMACOLOGYPharmacodynamic properties

VIAGRA is an oral therapy for erectile dysfunction which restores impaired erectile function by increasing blood flow to the penis, resulting in a natural response to sexual stimulation.

The physiological mechanism responsible for erection of the penis involves the release of nitric oxide (NO) in the corpus cavernosum during sexual stimulation. Nitric oxide then activates the enzyme, guanylate cyclase, which results in increased levels of cyclic guanosine monophosphate (cGMP), producing smooth muscle relaxation in the corpus cavernosum and allowing inflow of blood.

Sildenafil is a potent and selective inhibitor of cGMP specific phosphodiesterase type 5 (PDE5) which is responsible for degradation of cGMP in the corpus cavernosum. VIAGRA has a peripheral site of action on erections. Sildenafil has no direct relaxant effect on isolated human corpus cavernosum but potently enhances the relaxant effect of NO on this tissue. When the NO/cGMP pathway is activated,

VIAGRA (sildenafil) Draft PI #16

Last revised on 01-Sep-98 at 14:54

S:\MSWORD\Regn\VIAGRA\pi\16clean.doc

occurs with sexual stimulation, inhibition of PDE5 by sildenafil results in increased corpus cavernosum levels of cGMP. Therefore sexual stimulation is required in order for VIAGRA to produce its beneficial pharmacological effects.

Single oral doses of VIAGRA up to 100 mg in healthy volunteers produced no clinically relevant effects on ECG. The mean maximum decreases in supine systolic blood pressure following 100 mg oral dosing was 8.4 mmHg. The corresponding change in supine diastolic blood pressure was 5.5 mmHg. These decreases in blood pressure are consistent with the vasodilatory effects of sildenafil, probably due to increased cGMP levels in vascular smooth muscle.

VIAGRA has no effect on visual acuity or contrast sensitivity. Mild and transient differences in colour discrimination (blue/green) were detected in some subjects using Farnsworth-Munsell 100 hue test at 1 hour following a 100 mg dose, with no effects evident after 2 hours post-dose. The postulated mechanism for this change in colour discrimination is related to inhibition of PDE6, which is involved in the phototransduction cascade of the retina. *In vitro* studies show that sildenafil is 10-fold less potent against PDE6 than PDE5.

Human platelets contain PDE5 enzyme system. Sildenafil, in limited studies, did not affect platelet function *in vivo*. In *in vitro* studies sildenafil was shown to potentiate the antiaggregatory effect of the nitric oxide donor, sodium nitroprusside.

Studies *in vitro* have shown that sildenafil has between 10 and 10,000-fold greater selectivity for PDE5 than for other phosphodiesterase isoforms (PDE's 1,2,3,4 and 6). In particular, sildenafil has greater than 4,000-fold selectivity for PDE5 over PDE3, the cAMP-specific phosphodiesterase isoform involved in the control of cardiac contractility.

Clinical Trials

The efficacy and safety of VIAGRA was evaluated in 21 randomised, double-blind placebo controlled trials up to 6 months duration. VIAGRA was administered to more than 3,000 patients aged 19-87, with ED of various aetiologies (organic, psychogenic, mixed). The efficacy was evaluated by global assessment question, diary of erections, the International Index of Erectile Function (IIEF, a validated sexual function questionnaire) and a partner questionnaire.

VIAGRA efficacy, determined as the ability to achieve and maintain an erection sufficient for sexual intercourse, was demonstrated in all 21 studies and was maintained in long term extension studies (one year). In fixed dose studies the proportions of patients reporting that treatment improved their erections were 62% (25 mg), 74% (50 mg), 82% (100 mg) compared to 25% on placebo. In addition to improvements in erectile function, analysis of IIEF showed that VIAGRA treatment also improved the domains of orgasm, satisfaction with intercourse and overall satisfaction.

Across all trials, the proportion of patients reporting improvement on VIAGRA were 59% of diabetic patients, 43% of radical prostatectomy patients and 83% of patients with spinal cord injury (versus 16%, 15% and 12% on placebo respectively).

Pharmacokinetic Properties

Absorption

Sildenafil is rapidly absorbed. Maximum observed plasma concentrations are reached within 30 to 120 minutes (median 60 minutes) of oral dosing in the fasted state. The mean absolute oral bioavailability is 41% (range 25-63%). The oral pharmacokinetics of sildenafil are proportional over the recommended dose range (25 mg-100 mg).

When VIAGRA is taken with a high fat meal, the rate of absorption is reduced with a mean delay in T_{max} of 60 minutes and a mean reduction in C_{max} of 29%. Patients may need to individualise their dosing relative to their food intake based on their own experienced clinical response.

Distribution

The mean steady state volume of distribution (V_{ss}) for sildenafil is 105 L, indicating distribution into the tissues. Sildenafil and its major circulating N-desmethyl metabolite are both approximately 96% bound to plasma proteins. Protein binding is independent of total drug concentrations.

In sixteen healthy volunteers receiving VIAGRA (100 mg single dose), the mean semen concentrations of sildenafil 1.5 and 4 hours post-dose were 18% and 17% respectively of the plasma concentration at the same time point. The concentration in the ejaculate at 90 minutes after dosing was less than 0.0002% of the administered dose.

Metabolism

Sildenafil is cleared predominantly by the CYP3A4 (major route) and CYP2C9 (minor route) hepatic microsomal isoenzymes. The major circulating metabolite results from N-demethylation of sildenafil. This metabolite has a PDE selectivity profile similar to sildenafil and an in vitro potency for PDE5 approximately 40% of the parent drug. Plasma concentrations of this metabolite are approximately 40% of those seen for sildenafil. The N-desmethyl metabolite is further metabolised with a terminal half-life of approximately 4 h.

Elimination

The total body clearance of sildenafil is 41 L/h with a resultant terminal phase half-life of 3-5 hours. After either oral or intravenous administration, sildenafil is excreted as metabolites predominantly in the faeces (approximately 80% of administered oral dose) to a lesser extent in the urine (approximately 13% of administered oral dose).

Pharmacokinetics in Special Patient Groups

Elderly

Healthy elderly volunteers (65 years or over) had a reduced clearance of sildenafil, with free plasma concentrations approximately 40% greater than those seen in younger volunteers (18-45 years). However, analysis of the safety database showed that age had no effect on the incidence of adverse events.

Renal Insufficiency

In volunteers with mild ($Cl_{cr} = 50-80$ mL/min) and moderate ($Cl_{cr} = 30-49$ mL/min) renal impairment, the pharmacokinetics of a single oral dose of VIAGRA (50 mg) were not altered. In volunteers with severe ($Cl_{cr} = <30$ mL/min) renal impairment, sildenafil clearance was reduced, resulting in increases in AUC (100%) and C_{max} (88%) compared to age-matched volunteers with no renal impairment.

Hepatic Insufficiency

In volunteers with hepatic cirrhosis (Child-Pugh A and B), sildenafil clearance was reduced, resulting in increases in AUC (84%) and C_{max} (47%) compared to age-matched volunteers with no hepatic impairment. The pharmacokinetics of sildenafil in patients with severe hepatic impairment have not been studied.

INDICATIONS

VIAGRA is indicated for the treatment of erectile dysfunction in adult males.

VIAGRA is not indicated for use by women.

CONTRAINDICATIONS

Use of VIAGRA is contraindicated in patients with known hypersensitivity to any component of the tablet.

VIAGRA was shown to potentiate the hypotensive effects of organic nitrates, and its co-administration with nitric oxide donors or organic nitrates in any form is therefore contraindicated. Drugs which must not be used concomitantly include glyceryl trinitrate (injection, tablets, sprays or patches), isosorbide salts, sodium nitroprusside, amyl nitrite or organic nitrates in any form.

VIAGRA is contraindicated in men for whom sexual intercourse is inadvisable due to cardiovascular risk factors. The possibility of undiagnosed cardiovascular disorders in men with erectile dysfunction should be considered before prescribing VIAGRA.

The safety of sildenafil has not been studied in the following sub-groups of patients and its use is therefore contraindicated until further information is available: severe hepatic impairment, hypotension (blood pressure <90/50mm Hg), recent history of stroke or myocardial infarction and known hereditary degenerative retinal disorders such as retinitis pigmentosa (a minority of these patients have genetic disorders of retinal phosphodiesterases).

PRECAUTIONS

A thorough medical history and physical examination should be undertaken to diagnose erectile dysfunction, determine potential underlying causes, and identify appropriate treatment.

Prior to initiating any treatment for erectile dysfunction, physicians should consider the cardiovascular status of their patients, including those with recent onset angina, since there is a degree of cardiovascular risk associated with sexual intercourse. VIAGRA has vasodilator properties, resulting in mild and transient decreases in blood pressure and, as such, potentiates the hypotensive effect of nitrates (see CONTRAINDICATIONS).

Agents for the treatment of erectile dysfunction should be used with caution in patients with anatomical deformation of the penis (such as angulation, cavernosal fibrosis or Peyronie's disease), or in patients who have conditions which may predispose them to priapism (such as sickle cell anaemia, multiple myeloma or leukemia).

The safety and efficacy of combinations of VIAGRA with other treatments for erectile dysfunction have not been studied. Therefore the use of such combinations is not recommended.

VIAGRA had no effect of bleeding time, including during co-administration with aspirin. In vitro studies with human platelets indicates that sildenafil potentiates the antiaggregatory effect of sodium nitroprusside (a nitric oxide donor). There is no safety information on the administration of VIAGRA to patients with bleeding disorders or active peptic ulceration. Therefore VIAGRA should be administered with caution to these patients.

A minority of patients with the inherited condition retinitis pigmentosa have genetic disorders of retinal phosphodiesterases. There is no safety information on the administration of VIAGRA to patients with retinitis pigmentosa. Therefore, VIAGRA should be administered with caution to these patients.

The safety of VIAGRA in the following groups has not been studied and therefore VIAGRA should be administered to these patients only after careful benefit-risk assessment: severe hepatic impairment, history of stroke or myocardial infarction within the last 6 months, other severe cardiovascular disease (such as established cardiac failure and unstable angina pectoris) and untreated diabetic retinopathy. There are limited safety data in patients with diabetic retinopathy.

The incidence of adverse events may be greater in those patients who require the maximum recommended dose of 100mg (e.g. some diabetic and spinal cord injury patients).

Patients with cardiovascular disease who have not engaged in sexual intercourse for a number of months should have their cardiovascular status carefully assessed prior to initiating treatment with VIAGRA.

VIAGRA causes mild and transient decreases in blood pressure (see **Pharmacodynamic properties**). There is no safety information in patients with blood pressure of <90/50 mmHg and therefore VIAGRA should be administered to these patients only after careful risk-benefit assessment.

Carcinogenesis, mutagenesis and impairment of fertility

Sildenafil was not carcinogenic when administered to rats for 24 months at a dose resulting in total systemic drug exposure (AUC) for unbound sildenafil and its major metabolite of 35- and 39-times, for male and female rats, respectively, the exposures observed in human males given the Maximum Recommended Human Dose (MRHD) of 100 mg. Sildenafil was not carcinogenic when administered to mice for 18-21 months at dosages up to the maximum tolerated dose of 10 mg/kg/day, but resulting in total systemic drug exposure for unbound sildenafil and its major metabolite of less than the exposures observed in human males given the MRHD.

Sildenafil was negative in in-vitro bacterial and Chinese hamster ovary cell assays to detect mutagenicity, and in-vitro human lymphocytes and in-vivo mouse micronucleus assays to detect clastogenicity

There was no impairment of fertility in rats given sildenafil for 36 days to females and 102 days to males at a dose producing an AUC value of more than 25 times the human male AUC.

There is no information on the effects of sildenafil on semen production, sperm motility/morphology in patients suffering from erectile dysfunction. There was no effect on sperm motility or morphology after single 100 mg oral doses of VIAGRA in healthy volunteers.

Use in Pregnancy

Pregnancy category B1. VIAGRA is not indicated for use by women.

No evidence of teratogenicity, embryotoxicity or fetotoxicity was observed in rats and rabbits which received up to 200 mg/kg/day during organogenesis. The dose results in total systemic drug exposure (AUC) for unbound sildenafil and its major metabolite of greater than 60 times the exposure observed in human males given the Maximum Recommended Human Dose (MRHD) of 100 mg. In the rat pre- and postnatal development study, the no observed adverse effect dose was 30 mg/kg/day given for 36 days. In non-pregnant rat the AUC at this dose was about 20 times human AUC. There are no adequate and well controlled studies of sildenafil in pregnant women.

Use in Lactation

VIAGRA is not indicated for use in women. No information is available on its secretion into breast milk.

Effect on ability to drive and use machines

As transient visual disturbances and dizziness have been reported in some patients taking VIAGRA, particularly at the 100mg dose, patients should be aware of how they react to VIAGRA before driving or operating machinery, and the doctor should advise accordingly.

Interactions

Effects of other drugs on VIAGRA.

In-vitro studies:

Sildenafil metabolism is principally mediated by the cytochrome P450 (CYP) isoforms 3A4 (major route) and 2C9 (minor route). Therefore, inhibitors of these isoenzymes may reduce sildenafil clearance. Since systemic exposure to sildenafil increases on co-administration with inhibitors of CYP 3A4 such as cimetidine, erythromycin, and ketoconazole the VIAGRA dose may have to be reduced depending on tolerability.

VIAGRA (sildenafil) Draft PI #16

Last revised on 01-Sep-98 at 14:54

S:\MSWORD\Regn\VIAGRA\pi\16clean.doc

16

There is no information on the interaction between sildenafil and protease inhibitors or cyclosporine. It can be expected that concomitant administration of CYP3A4 inducers, such as rifampicin, will decrease plasma levels of sildenafil.

In-vivo studies:

Cimetidine (800 mg), a non-specific CYP3A4 inhibitor, caused a 56% increase in plasma sildenafil concentrations when co-administered with VIAGRA (50 mg) to healthy volunteers.

When a single 100mg dose of sildenafil was administered with erythromycin, a specific CYP3A4 inhibitor, at steady state (500mg B.I.D. for 5 days), there was a 182% increase in sildenafil systemic exposure (AUC).

Population pharmacokinetics analysis of clinical trial data indicated a reduction in sildenafil clearance when co-administered with CYP3A4 inhibitors (such as ketoconazole, erythromycin, cimetidine). However, there was no increased incidence of adverse events in these patients.

Single doses of antacid (magnesium hydroxide/aluminium hydroxide) did not affect the bioavailability of VIAGRA.

Population pharmacokinetic analysis showed no effect of concomitant medication on sildenafil pharmacokinetics when grouped as CYP2C9 inhibitors, CYP2D6 inhibitors (such as selective serotonin reuptake inhibitors, tricyclic antidepressants), thiazide and related diuretics, loop and potassium sparing diuretics, ACE inhibitors, calcium channel blockers, beta-adrenoreceptor antagonists or inducers of CYP450 metabolism (such as barbiturates).

Effects of VIAGRA on other drugs

In-vitro studies

Sildenafil is a weak inhibitor of the cytochrome P450 isoforms 1A2, 2C9, 2C19, 2D6, 2E1 and 3A4 (IC₅₀ > 150 µM). Given sildenafil peak plasma concentrations of approximately 1µM after recommended doses, it is unlikely that VIAGRA will alter the clearance of substrates of these isoenzymes.

There are no data on the interaction of sildenafil and non-specific phosphodiesterase inhibitors such as theophylline or dipyridamole.

In-vivo studies:

No significant interactions were shown when sildenafil 50mg was co-administered with tolbutamide (250 mg) or warfarin (40 mg), both of which are metabolised by CYP2C9.

VIAGRA (50 mg) did not potentiate the increase in bleeding time caused by aspirin (150 mg).

Sildenafil causes a small reduction in supine and tilted diastolic blood pressure (3.5 and 6.1mm Hg respectively) in healthy subjects who had a blood alcohol level of 80mg/dL.

No interaction was seen when VIAGRA (100 mg) was co-administered with amlodipine in hypertensive patients. The mean additive reduction on supine blood pressure (systolic, 8 mmHg; diastolic, 7 mmHg) was of a similar magnitude to that seen when VIAGRA was administered alone to healthy volunteers (see **Pharmacodynamic properties**).

Analysis of the safety data base showed no difference in the side effect profile in patients taking VIAGRA with and without anti-hypertensive medication.

VIAGRA was shown to potentiate the hypotensive effect of acute and chronic nitrates. Therefore, use of nitrates or nitric oxide donors with VIAGRA is contraindicated (see **CONTRAINDICATIONS**).

ADVERSE REACTIONS

VIAGRA was administered to over 3700 patients (aged 19-87) during clinical trials worldwide. Over 550 patients were treated for longer than one year.

Treatment with VIAGRA was well tolerated. In placebo controlled clinical studies, the discontinuation rate due to adverse events was low and similar to placebo. The adverse events were generally transient and mild to moderate in nature.

Across trials of all designs, the profile of adverse events reported by patients receiving VIAGRA was similar. In fixed dose studies, the incidence of adverse events increased with dose. The nature of the adverse events in flexible dose studies, which more closely reflect the recommended dosage regimen, was similar to that for fixed dose studies.

When VIAGRA was taken as recommended (on an as needed basis in flexible dose placebo controlled clinical trials) the following adverse events were reported:

Table 1: Adverse Events Reported by $\geq 2\%$ of Patients Treated with VIAGRA or Placebo in PRN Flexible Dose Phase II/III Studies.

Adverse Event	Percentage of Patients Reporting Event	
	VIAGRA (N=734)	PLACEBO (N=725)
Headache	16%	4%
Flushing	10%	1%
Dyspepsia	7%	2%
Nasal Congestion	4%	2%
Urinary Tract Infection	3%	2%
Abnormal Vision*	3%	0%
Diarrhoea	3%	1%
Dizziness	2%	1%
Rash	2%	1%

* Abnormal Vision: Mild and transient predominantly colour tinge to vision, but also increased perception to light or blurred vision. In these studies, only one patient discontinued due to abnormal vision. This effect was more common at doses of 100 mg or more.

Other adverse reactions occurred at a rate of $>2\%$, but equally commonly on placebo: respiratory tract infection, back pain, flu syndrome and arthralgia.

In fixed dose studies, dyspepsia (17%) and abnormal vision (11%) were more common at 100 mg than at lower doses.

At doses above the recommended dose range, adverse events were similar to those detailed above but generally were reported more frequently.

No cases of priapism were reported during controlled clinical trials.

The following events occurred in $<2\%$ of patients in controlled clinical trials; a causal relationship to VIAGRA is uncertain. Reported events include those with a plausible relation to drug use; omitted are minor events and reports too imprecise to be meaningful:

Body as a whole: face oedema, photosensitivity reaction, shock, asthenia, pain, chills, accidental fall, abdominal pain, allergic reaction, chest pain, accidental injury.

Cardiovascular: angina pectoris, AV block, migraine, syncope, tachycardia, palpitation, hypotension, postural hypotension, myocardial ischaemia, cerebral thrombosis, cardiac arrest, heart failure, abnormal electrocardiogram, cardiomyopathy.

Digestive: vomiting, glossitis, colitis, dysphagia, gastritis, gastroenteritis, oesophagitis, stomatitis, dry mouth, liver function tests abnormal, rectal haemorrhage, gingivitis.

Haemic and Lymphatic: anaemia and leukopenia.

Metabolic and Nutritional: thirst, oedema, gout, unstable diabetes, hyperglycaemia, peripheral oedema, hyperuricaemia, hypoglycaemic reaction, hypernatremia.

Musculoskeletal: arthritis, arthrosis, myalgia, tendon rupture, tenosynovitis, bone pain, myasthenia, synovitis.

Nervous: ataxia, hypertonia, neuralgia, neuropathy, paraesthesia, tremor, vertigo, depression, insomnia, somnolence, abnormal dreams, reflexes decreased, hypaesthesia.

Respiratory: asthma, dyspnoea, laryngitis, pharyngitis, sinusitis, bronchitis, sputum increased, cough increased.

Skin and appendages: urticaria, herpes simplex, pruritus, sweating, skin ulcer, contact dermatitis, exfoliative dermatitis.

Special senses: mydriasis, conjunctivitis, photophobia, tinnitus, eye pain, deafness, ear pain, eye haemorrhage, cataract, dry eyes.

Urogenital: cystitis, nocturia, urinary frequency, breast enlargement, urinary incontinence, abnormal ejaculation, genital oedema and anorgasmia.

Other events very rarely observed during the post marketing experience with VIAGRA that have not been shown to have a causal relationship with the drug include the following: priapism.

Overdosage

In studies with healthy volunteers, of single doses up to 800 mg, adverse events were similar to those seen at lower doses but incidence rates were increased.

In cases of overdose, standard supportive measures should be adopted as required. Renal dialysis is not expected to accelerate clearance as sildenafil is highly bound to plasma proteins and not eliminated in the urine.

DOSAGE AND ADMINISTRATION

VIAGRA tablets are for oral administration.

Use in Adults

The recommended dose is 50 mg taken as needed approximately one hour before sexual activity. Based on the efficacy and toleration, the dose may be increased to 100 mg or decreased to 25 mg. The maximum recommended dose is 100 mg. The maximum recommended dosing frequency is once per day.

Use in The Elderly

Since sildenafil clearance is reduced in elderly patients, a first dose of 25mg should be considered. Based on efficacy and toleration, the dose may be increased to 50mg and 100mg.

Use in Patients with Impaired Renal Function

The dosing recommendations for **Use in Adults** should be followed for patients with mild to moderate renal impairment (Cl_{cr} = 30-80 mL/min).

Since sildenafil clearance is reduced in patients with severe renal impairment (Cl_{cr}<30 mL/min) a 25 mg starting dose may be considered. Based on efficacy and toleration, the dose may be increased to 50 mg and 100 mg.

Use in patients with impaired hepatic function

Since sildenafil clearance is reduced in patients with hepatic impairment (e.g. cirrhosis) a 25 mg starting dose may be considered. Based on efficacy and toleration, the dose may be increased to 50 mg and 100 mg.

Use in Children

VIAGRA is not indicated for use in children

PRESENTATION

Film coated tablet.

The 25 mg tablets are blue film-coated, rounded diamond-shaped tablets, marked PFIZER on one side and VGR 25 on the other.

The 50 mg tablets are blue film-coated, rounded diamond-shaped tablets, marked PFIZER on one side and VGR 50 on the other.

The 100 mg tablets are blue film-coated, rounded diamond-shaped tablets, marked PFIZER on one side and VGR 100 on the other.

VIAGRA tablets are presented in blister packs of 4 tablets.

Approved by TGA on