

Instrument controller software run summary:

Filename and data path: C:\Agilent Technologies\Data\2021 10 19\14-12-46\2021 10 19 14H 12M.raw

Created: Tuesday, October 19, 2021 2:38:10 PM

Number of capillaries: 10

Array serial number: 022621-27SFS

Effect length: 33 cm

Array usage count: 29

Instrument type: 5300 Fragment Analyzer

Instrument controller software version: 3.1.0.12

Device serial number: MY2105AB19

Method Information

Method name: DNF-471E33 - SS Total RNA 15nt Extended.mthds

Gel prime: No

Full conditioning: Yes

Gel prime to buffer: Yes

Gel selection: Gel 2

Perform prerun: 8.0 kV, 30 sec.

Rinse: No

Marker 1: No

Rinse: Tray: 3, Row: A, Dip count: 2

Sample injection: 5.0 kV, 6 sec.

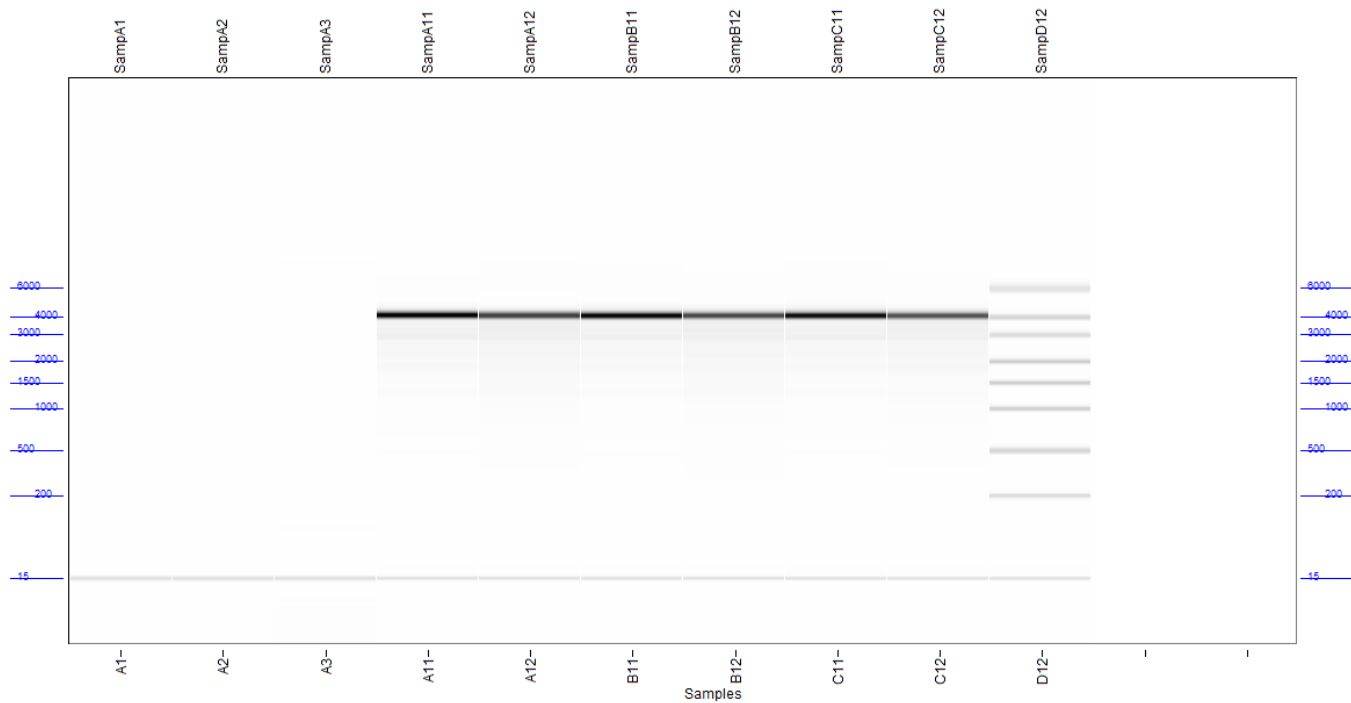
Separation: 8.0 kV, 60.0 min.

Tray name: Tray-1

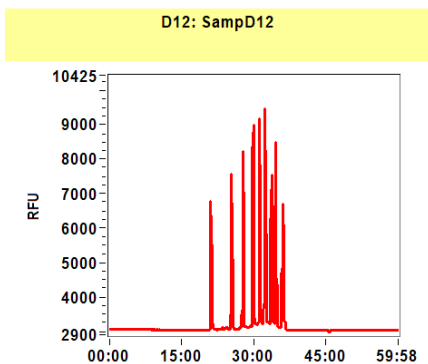
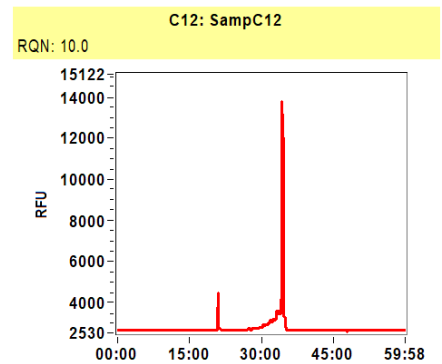
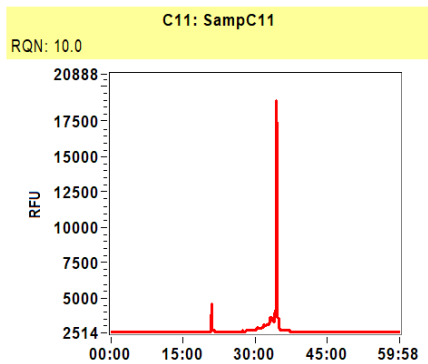
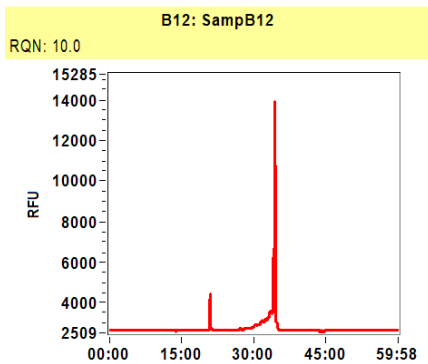
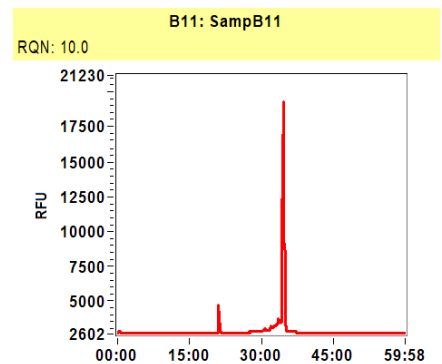
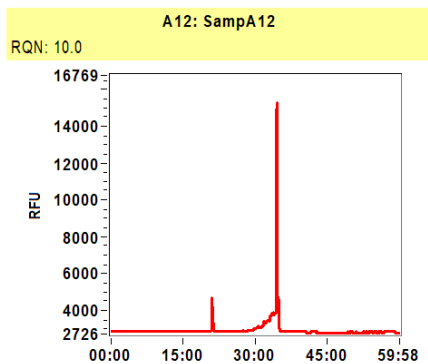
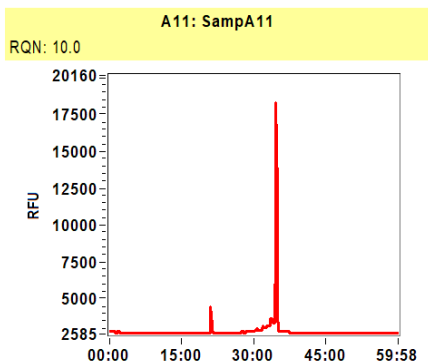
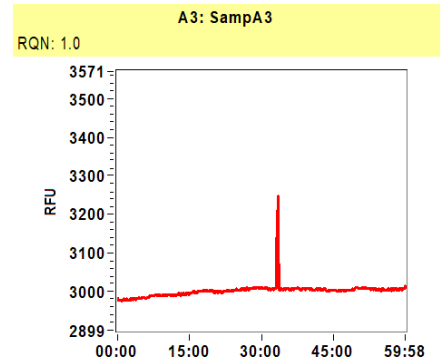
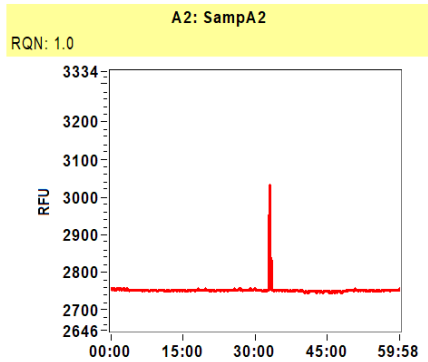
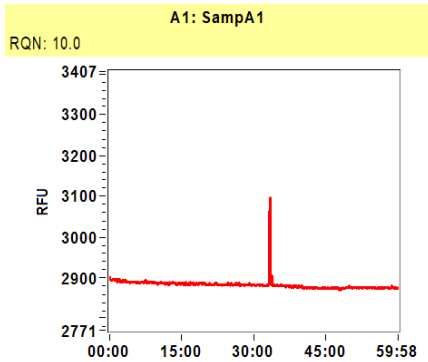
Analysis mode: RNA (Eukaryotic)

Notes

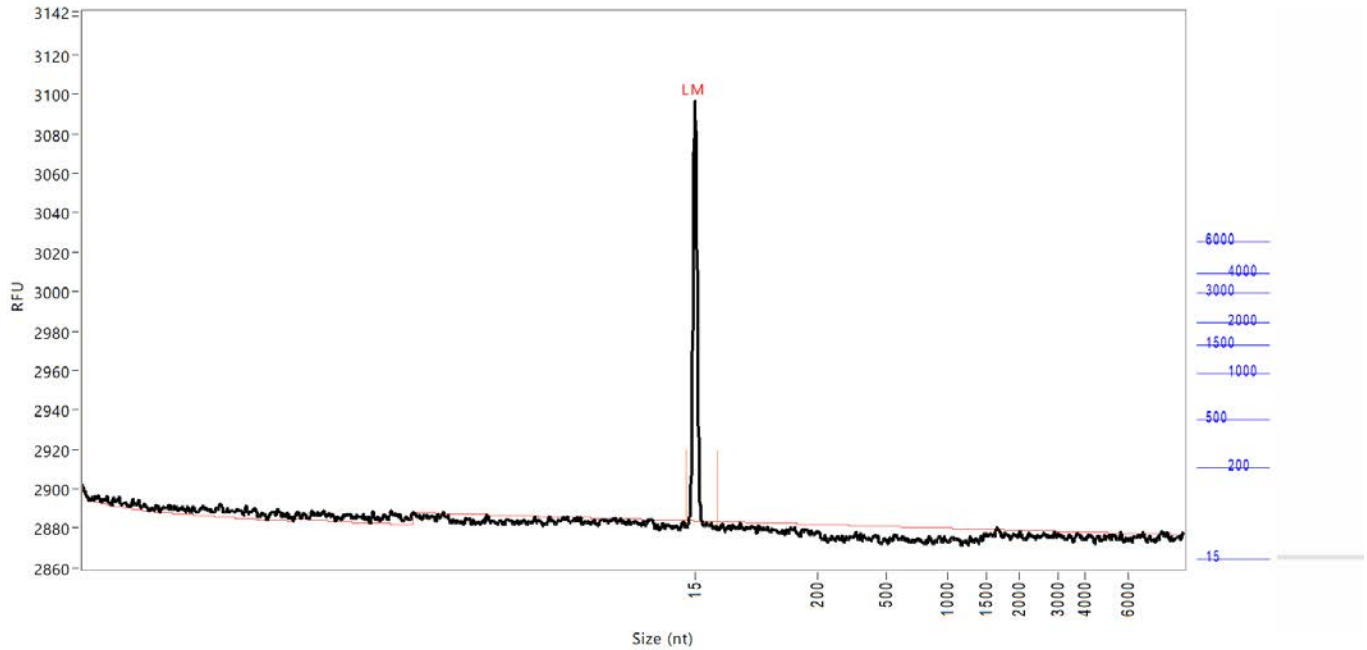
Gel Image



Filename and data path: C:\Agilent Technologies\Data\2021 10 19\14-12-46\2021 10 19 14H 12M.raw



Sample: SampA1
Well location: A1
Created: Tuesday, October 19, 2021 2:38:10 PM

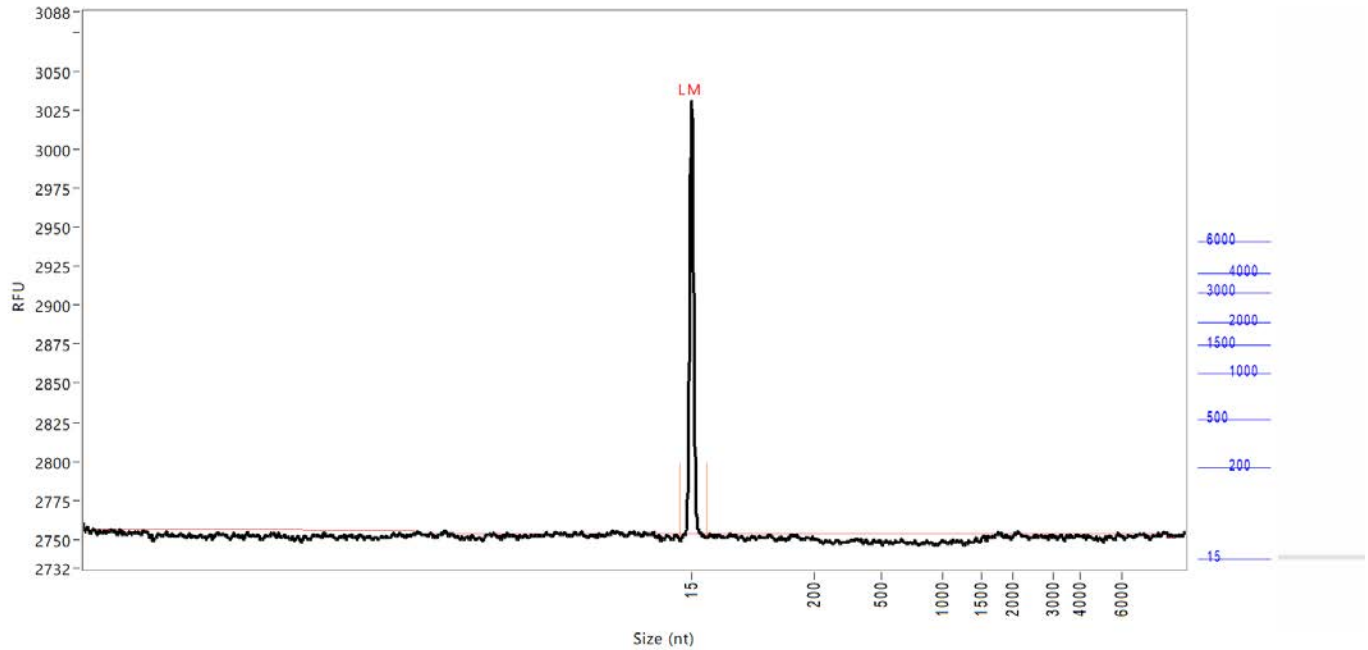


Peak	Size	Concentration	From	To	RFU
	(nt)	(ng/uL)	(nt)	(nt)	
1	15 (LM)	0.6807	3	51	211
	TIC:	0.0000	ng/uL		
	TIM:	0.0000	nmole/L		
	Total concentration:	0.0000	ng/uL		
	28s/18s:	0.0			
	RQN	10.0			

Smear Analysis	3700 nt to 4800 nt	0.0000 ng/ul	NaN %Total	NaN nmole/L	NaN Avg. Size (nt)	NaN %CV
	4800 nt to 13000 nt	0.0000 ng/ul	NaN %Total	NaN nmole/L	NaN Avg. Size (nt)	NaN %CV

Sample peak width (sec): 6 Sample min peak height: 50 Sample baseline V to V?: N Sample baseline V to V points: 3
 Sample filter: Binomial Number of points for filter: 9 Sample start region (min): 0 Sample end region (min): 60
 Manual baseline start (min): 18 Manual baseline end (min): 59
 Marker peak width (sec): 6 Marker min peak height: 100 Marker baseline V to V?: Y Marker baseline V to V points: 3
 Lower marker selection: First peak > 100 RFU Upper marker selection: Last peak > 100 RFU
 Ladder size (nt) 15, 200, 500, 1000, 1500, 2000, 3000, 4000, 6000
 Quantification using: Ladder Final concentration (ng/uL): 8.0000 Dilution factor: 12.0
 Minimum RFU for data processing: 2

Sample: SampA2
Well location: A2
Created: Tuesday, October 19, 2021 2:38:10 PM



Peak	Size	Concentration	From	To	RFU
	(nt)	(ng/uL)	(nt)	(nt)	
1	15 (LM)	0.6807	0	38	275
	TIC:	0.0000	ng/uL		
	TIM:	0.0000	nmole/L		
	Total concentration:	0.0032	ng/uL		
	28s/18s:	0.0			
	RQN	1.0			

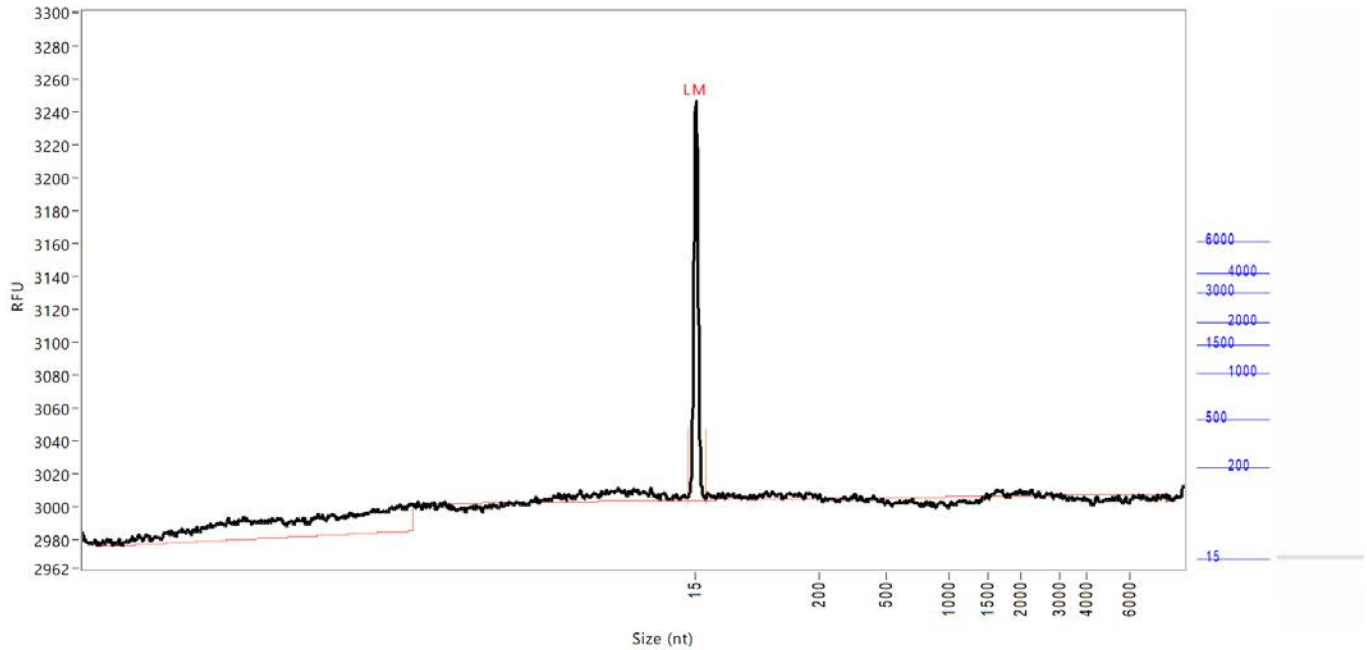
Smear Analysis	Size Range	Concentration	%Total	Concentration	Avg. Size	%CV
	3700 nt to 4800 nt	0.0000 ng/uL	0.0 %Total	NaN nmole/L	NaN Avg. Size (nt)	NaN %CV
	4800 nt to 13000 nt	0.0032 ng/uL	100.0 %Total	0.0012 nmole/L	8203 Avg. Size (nt)	0.47 %CV

Sample peak width (sec): 6 Sample min peak height: 50 Sample baseline V to V?: N Sample baseline V to V points: 3
 Sample filter: Binomial Number of points for filter: 9 Sample start region (min): 0 Sample end region (min): 60
 Manual baseline start (min): 18 Manual baseline end (min): 59
 Marker peak width (sec): 6 Marker min peak height: 100 Marker baseline V to V?: Y Marker baseline V to V points: 3
 Lower marker selection: First peak > 100 RFU Upper marker selection: Last peak > 100 RFU
 Ladder size (nt) 15, 200, 500, 1000, 1500, 2000, 3000, 4000, 6000
 Quantification using: Ladder Final concentration (ng/uL): 8.0000 Dilution factor: 12.0
 Minimum RFU for data processing: 2

Sample: SampA3

Well location: A3

Created: Tuesday, October 19, 2021 2:38:10 PM

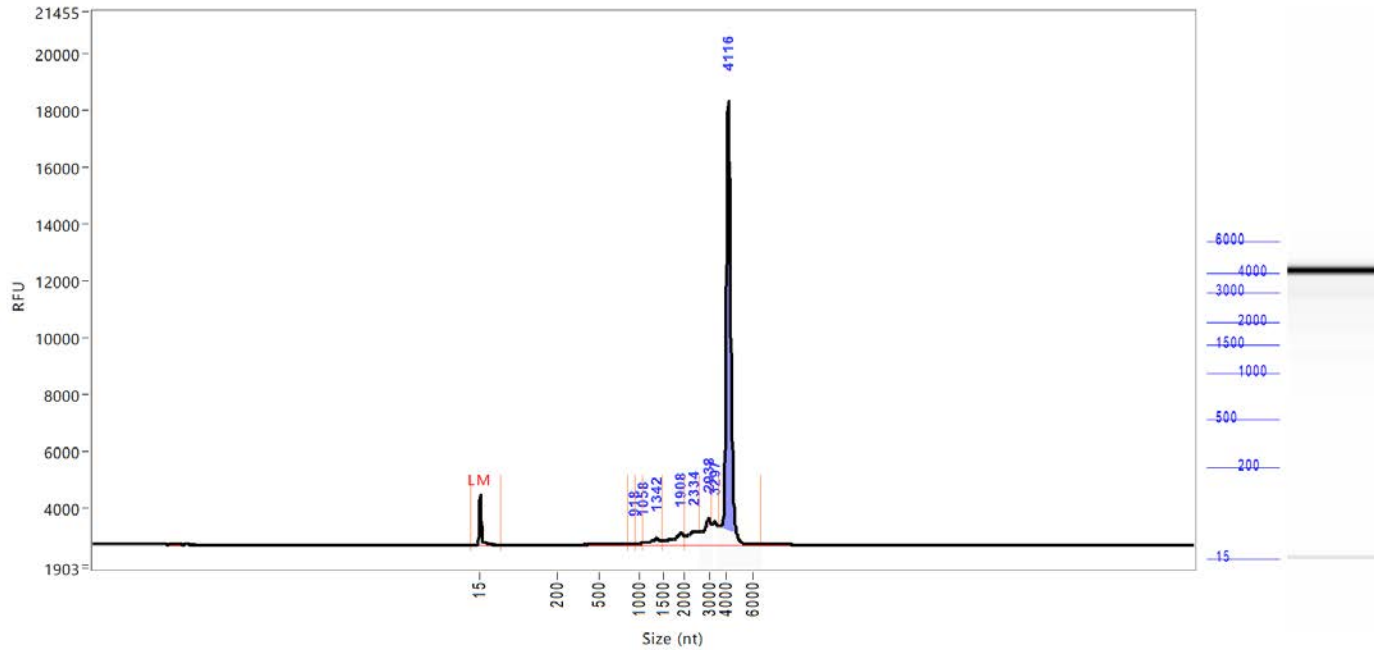


Peak	Size	Concentration	From	To	RFU
	(nt)	(ng/uL)	(nt)	(nt)	
1	15 (LM)	0.6807	3	30	241
	TIC:	0.0000	ng/uL		
	TIM:	0.0000	nmole/L		
	Total concentration:	0.4304	ng/uL		
	28s/18s:	0.0			
	RQN	1.0			

Smear Analysis	Size Range	Concentration	%Total	Concentration	Avg. Size	%CV
	3700 nt to 4800 nt	0.0000 ng/uL	0.0 %Total	NaN nmole/L	NaN Avg. Size (nt)	NaN %CV
	4800 nt to 13000 nt	0.0099 ng/uL	2.3 %Total	0.0039 nmole/L	7801 Avg. Size (nt)	0.83 %CV

Sample peak width (sec): 6 Sample min peak height: 50 Sample baseline V to V?: N Sample baseline V to V points: 3
 Sample filter: Binomial Number of points for filter: 9 Sample start region (min): 0 Sample end region (min): 60
 Manual baseline start (min): 18 Manual baseline end (min): 59
 Marker peak width (sec): 6 Marker min peak height: 100 Marker baseline V to V?: Y Marker baseline V to V points: 3
 Lower marker selection: First peak > 100 RFU Upper marker selection: Last peak > 100 RFU
 Ladder size (nt) 15, 200, 500, 1000, 1500, 2000, 3000, 4000, 6000
 Quantification using: Ladder Final concentration (ng/uL): 8.0000 Dilution factor: 12.0
 Minimum RFU for data processing: 2

Sample: SampA11
Well location: A11
Created: Tuesday, October 19, 2021 2:38:10 PM



Peak	Size	Concentration	From	To	RFU
	(nt)	(ng/uL)	(nt)	(nt)	
1	15 (LM)	0.6807	0	64	1760
2	918	0.5766	848	953	63
3	1058	0.5753	953	1064	78
4	1342	3.2912	1064	1456	240
5	1908	6.6291	1456	2013	406
6	2334	6.5790	2013	2581	460
7	2938	9.1450	2581	3112	926
8	3297	5.6431	3112	3519	808
9	4116	93.1414	3519	6569	15622

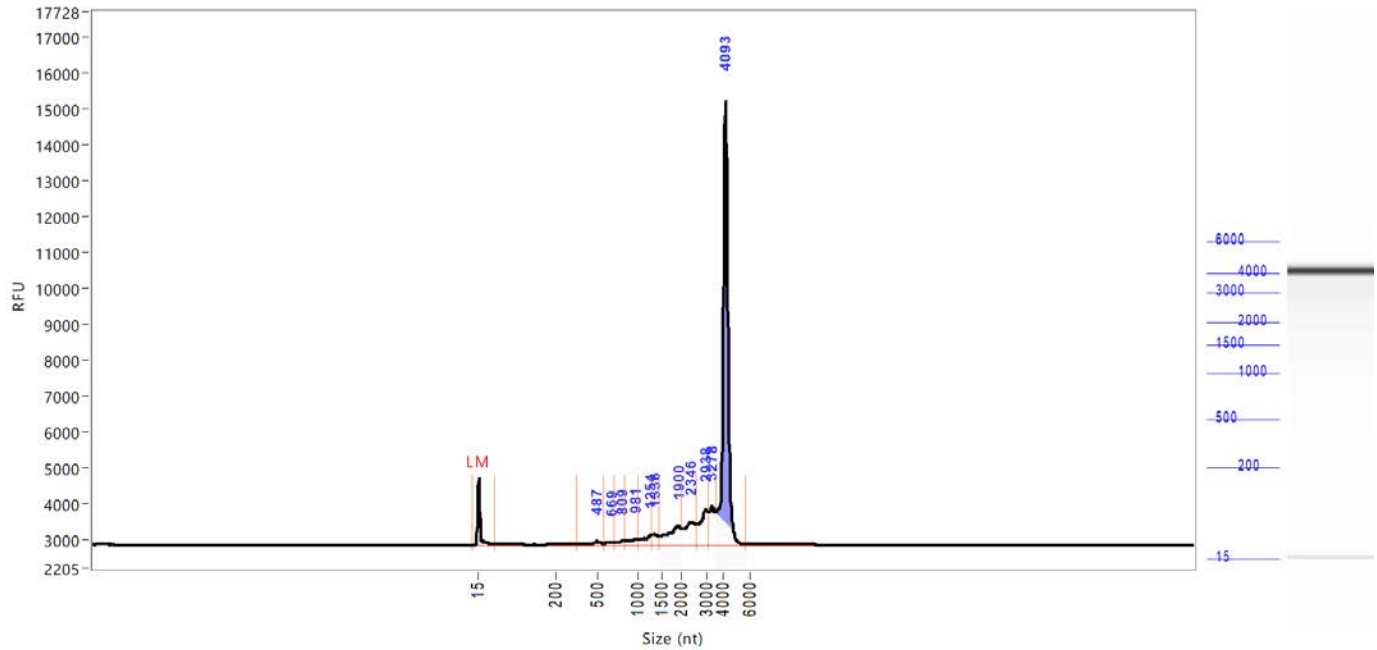
TIC: 125.5808 ng/uL
 TIM: 117.6234 nmole/L
 Total concentration: 127.1388 ng/uL

28s/18s: 68.0
 RQN 10.0

Smear Analysis	3700 nt to 4800 nt	89.3746 ng/ul	70.3 %Total	67.4024 nmole/L	4137 Avg. Size (nt)	4.15 %CV
	4800 nt to 13000 nt	2.4077 ng/ul	1.9 %Total	1.2252 nmole/L	6131 Avg. Size (nt)	20.63 %CV

Sample peak width (sec): 6 Sample min peak height: 50 Sample baseline V to V?: N Sample baseline V to V points: 3
 Sample filter: Binomial Number of points for filter: 9 Sample start region (min): 0 Sample end region (min): 60
 Manual baseline start (min): 18 Manual baseline end (min): 59
 Marker peak width (sec): 6 Marker min peak height: 100 Marker baseline V to V?: Y Marker baseline V to V points: 3
 Lower marker selection: First peak > 100 RFU Upper marker selection: Last peak > 100 RFU
 Ladder size (nt) 15, 200, 500, 1000, 1500, 2000, 3000, 4000, 6000
 Quantification using: Ladder Final concentration (ng/uL): 8.0000 Dilution factor: 12.0
 Minimum RFU for data processing: 2

Sample: SampA12
Well location: A12
Created: Tuesday, October 19, 2021 2:38:10 PM



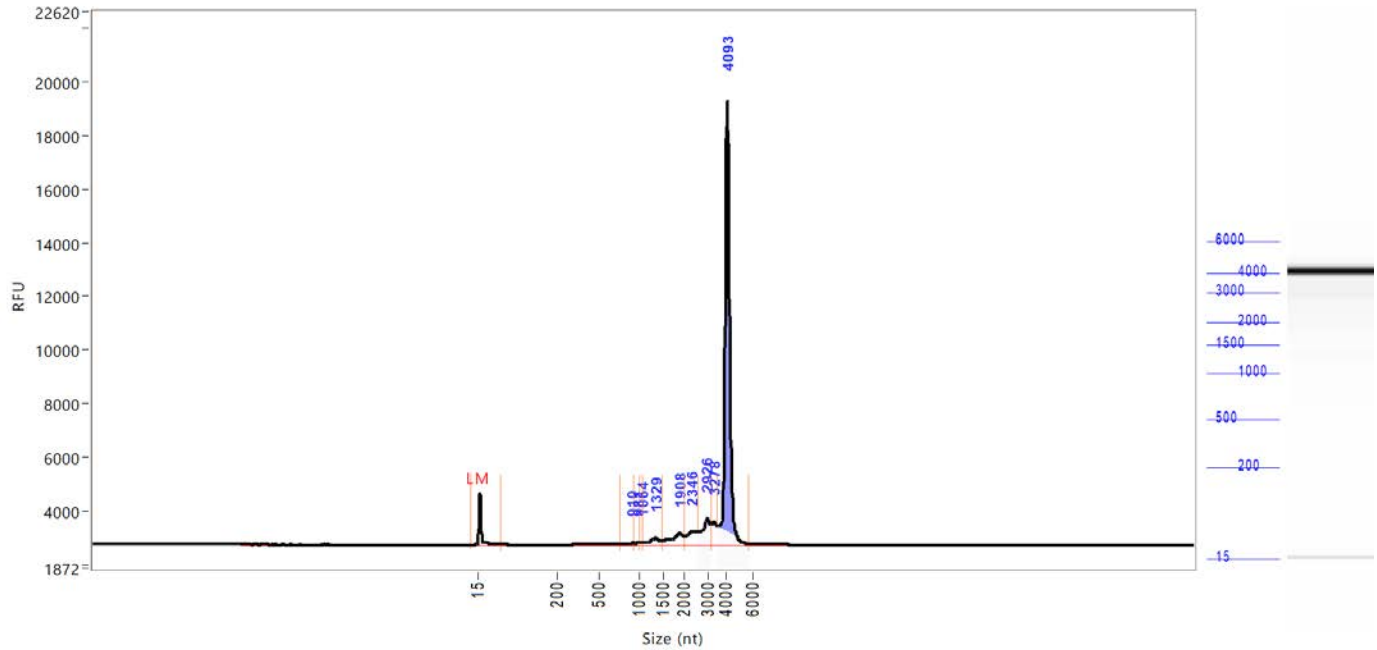
Peak	Size (nt)	Concentration (ng/uL)	From (nt)	To (nt)	RFU
1	15 (LM)	0.6807	0	56	1864
2	487	1.6180	348	563	114
3	669	0.7995	563	700	71
4	809	1.1022	700	836	108
5	981	1.9368	836	1001	141
6	1254	2.9896	1001	1279	273
7	1336	2.5270	1279	1443	301
8	1900	9.3516	1443	2001	529
9	2346	8.5530	2001	2581	625
10	2938	9.8084	2581	3075	1006
11	3278	7.0466	3075	3482	1068
12	4093	73.2827	3482	5609	12399

TIC: 119.0154 ng/uL
 TIM: 141.1174 nmole/L
 Total concentration: 120.5461 ng/uL
 28s/18s: 78.8
 RQN 10.0

Smear Analysis	3700 nt to 4800 nt	69.0081 ng/ul	57.2 %Total	52.3241 nmole/L	4115 Avg. Size (nt)	4.35 %CV
	4800 nt to 13000 nt	2.4054 ng/ul	2.0 %Total	1.0769 nmole/L	6968 Avg. Size (nt)	24.81 %CV

Sample peak width (sec): 6 Sample min peak height: 50 Sample baseline V to V?: N Sample baseline V to V points: 3
 Sample filter: Binomial Number of points for filter: 9 Sample start region (min): 0 Sample end region (min): 60
 Manual baseline start (min): 18 Manual baseline end (min): 59
 Marker peak width (sec): 6 Marker min peak height: 100 Marker baseline V to V?: Y Marker baseline V to V points: 3
 Lower marker selection: First peak > 100 RFU Upper marker selection: Last peak > 100 RFU
 Ladder size (nt) 15, 200, 500, 1000, 1500, 2000, 3000, 4000, 6000
 Quantification using: Ladder Final concentration (ng/uL): 8.0000 Dilution factor: 12.0
 Minimum RFU for data processing: 2

Sample: SampB11
Well location: B11
Created: Tuesday, October 19, 2021 2:38:10 PM



Peak	Size (nt)	Concentration (ng/uL)	From (nt)	To (nt)	RFU
1	15 (LM)	0.6807	0	65	1922
2	910	0.8501	762	938	68
3	981	0.3677	938	996	70
4	1064	0.3755	996	1070	91
5	1329	3.1841	1070	1449	260
6	1908	6.5121	1449	2013	432
7	2346	5.9791	2013	2544	498
8	2926	9.1473	2544	3094	994
9	3278	5.4363	3094	3500	864
10	4093	87.8483	3500	5678	16575

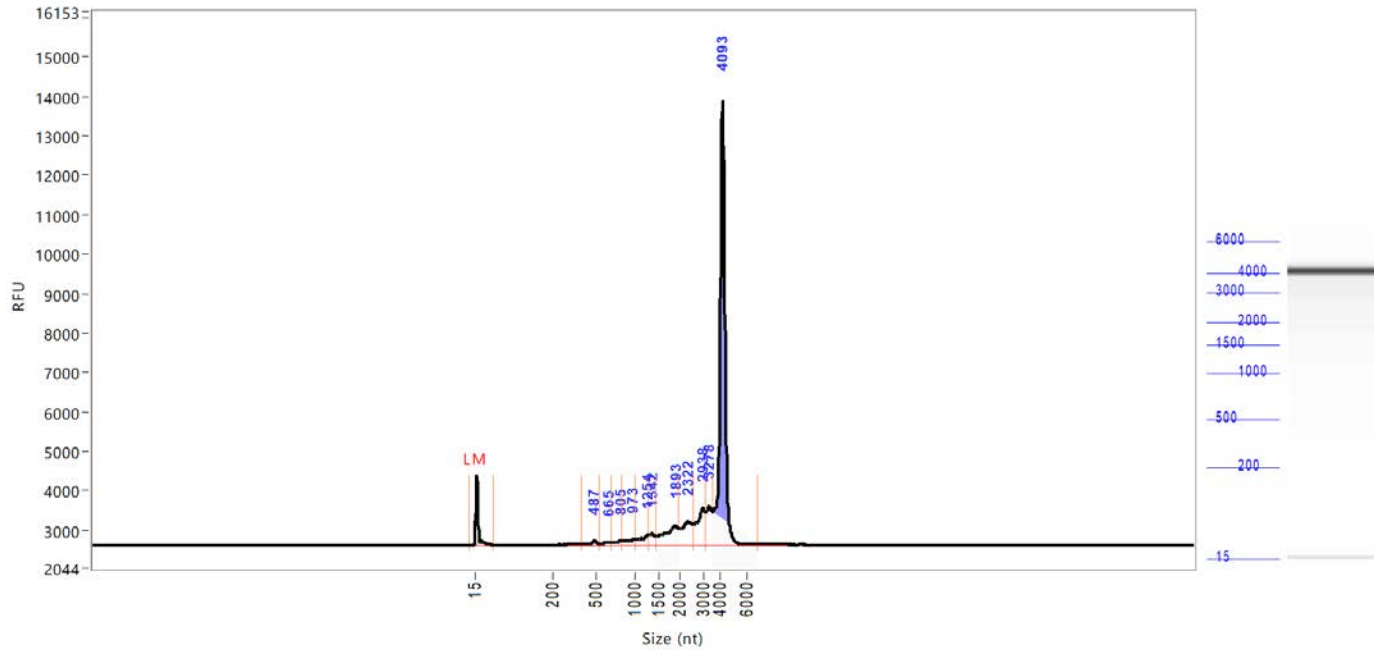
TIC: 119.7005 ng/uL
 TIM: 114.6990 nmole/L
 Total concentration: 122.0403 ng/uL

28s/18s: 67.8
 RQN 10.0

Smear Analysis 3700 nt to 4800 nt 84.2506 ng/uL 69.0 %Total 64.0335 nmole/L 4105 Avg. Size (nt) 4.13 %CV
 4800 nt to 13000 nt 2.8257 ng/uL 2.3 %Total 1.4372 nmole/L 6134 Avg. Size (nt) 19.63 %CV

Sample peak width (sec): 6 Sample min peak height: 50 Sample baseline V to V?: N Sample baseline V to V points: 3
 Sample filter: Binomial Number of points for filter: 9 Sample start region (min): 0 Sample end region (min): 60
 Manual baseline start (min): 18 Manual baseline end (min): 59
 Marker peak width (sec): 6 Marker min peak height: 100 Marker baseline V to V?: Y Marker baseline V to V points: 3
 Lower marker selection: First peak > 100 RFU Upper marker selection: Last peak > 100 RFU
 Ladder size (nt) 15, 200, 500, 1000, 1500, 2000, 3000, 4000, 6000
 Quantification using: Ladder Final concentration (ng/uL): 8.0000 Dilution factor: 12.0
 Minimum RFU for data processing: 2

Sample: SampB12
Well location: B12
Created: Tuesday, October 19, 2021 2:38:10 PM



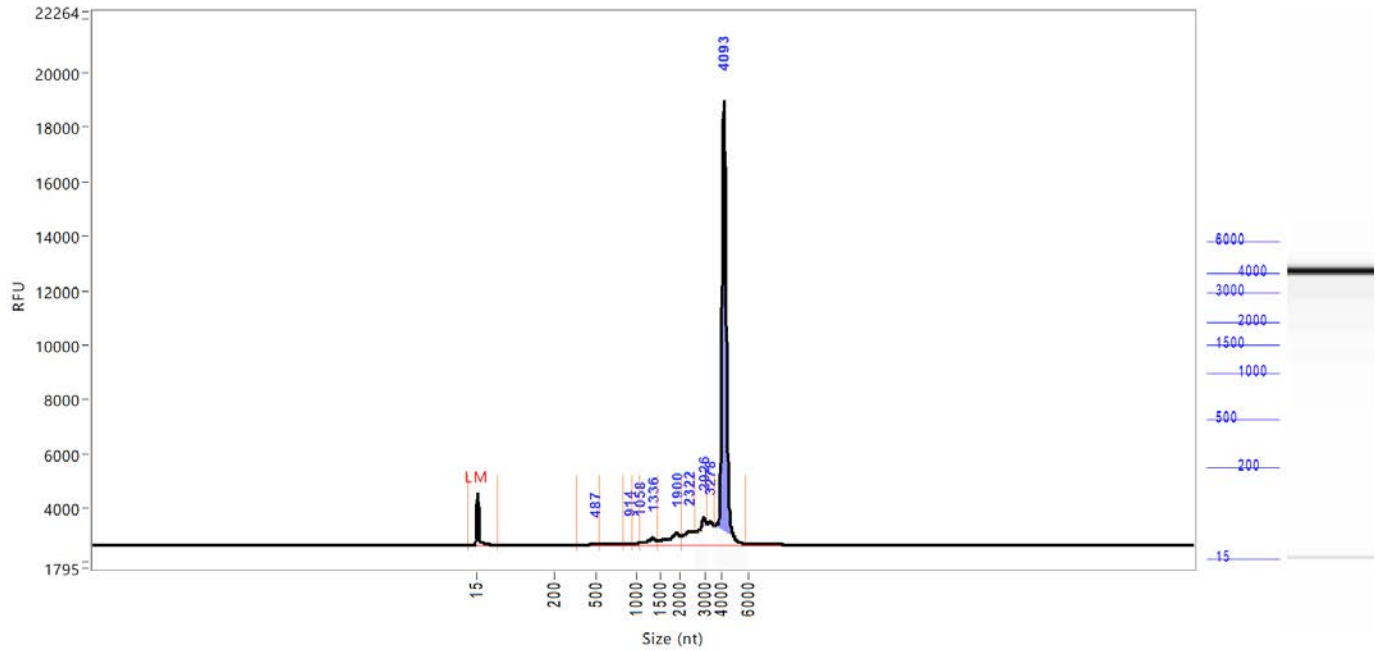
Peak	Size (nt)	Concentration (ng/uL)	From (nt)	To (nt)	RFU
1	15 (LM)	0.6807	0	56	1785
2	487	1.2137	396	540	105
3	665	0.8884	540	700	68
4	805	1.1765	700	840	102
5	973	1.7866	840	996	132
6	1254	2.9922	996	1279	257
7	1342	2.5797	1279	1449	281
8	1893	9.0329	1449	2000	499
9	2322	8.4534	2000	2568	590
10	2938	9.6459	2568	3075	936
11	3278	6.9062	3075	3482	995
12	4093	71.4367	3482	6705	11272

TIC: 116.1122 ng/uL
 TIM: 136.2734 nmole/L
 Total concentration: 116.9943 ng/uL
 28s/18s: 74.1
 RQN 10.0

Smear Analysis 3700 nt to 4800 nt 66.5287 ng/ul 56.9 %Total 50.5617 nmole/L 4105 Avg. Size (nt) 4.37 %CV
 4800 nt to 13000 nt 2.2911 ng/ul 2.0 %Total 1.1083 nmole/L 6450 Avg. Size (nt) 24.17 %CV

Sample peak width (sec): 6 Sample min peak height: 50 Sample baseline V to V?: N Sample baseline V to V points: 3
 Sample filter: Binomial Number of points for filter: 9 Sample start region (min): 0 Sample end region (min): 60
 Manual baseline start (min): 18 Manual baseline end (min): 59
 Marker peak width (sec): 6 Marker min peak height: 100 Marker baseline V to V?: Y Marker baseline V to V points: 3
 Lower marker selection: First peak > 100 RFU Upper marker selection: Last peak > 100 RFU
 Ladder size (nt) 15, 200, 500, 1000, 1500, 2000, 3000, 4000, 6000
 Quantification using: Ladder Final concentration (ng/uL): 8.0000 Dilution factor: 12.0
 Minimum RFU for data processing: 2

Sample: SampC11
Well location: C11
Created: Tuesday, October 19, 2021 2:38:10 PM



Peak	Size (nt)	Concentration (ng/uL)	From (nt)	To (nt)	RFU
1	15 (LM)	0.6807	0	64	1938
2	487	0.6229	355	532	55
3	914	0.6302	840	949	71
4	1058	0.6335	949	1064	92
5	1336	3.2577	1064	1449	266
6	1900	6.8706	1449	2026	441
7	2322	6.1437	2026	2568	499
8	2926	9.0335	2568	3094	1009
9	3278	5.5403	3094	3500	871
10	4093	88.0422	3500	5793	16358

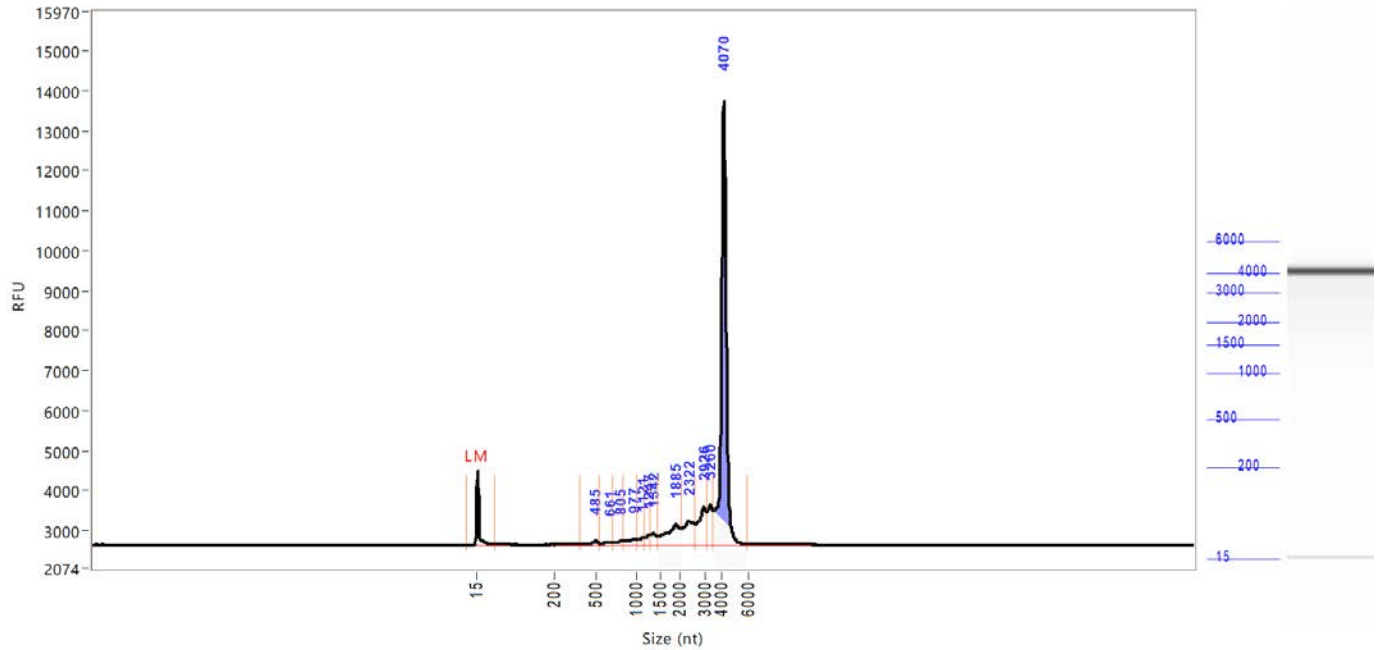
TIC: 120.7746 ng/uL
 TIM: 118.5757 nmole/L
 Total concentration: 122.9482 ng/uL

28s/18s: 64.5
 RQN 10.0

Smear Analysis	3700 nt to 4800 nt	84.0640 ng/uL	68.4 %Total	63.7958 nmole/L	4111 Avg. Size (nt)	4.23 %CV
	4800 nt to 13000 nt	3.3360 ng/uL	2.7 %Total	1.6881 nmole/L	6166 Avg. Size (nt)	20.55 %CV

Sample peak width (sec): 6 Sample min peak height: 50 Sample baseline V to V?: N Sample baseline V to V points: 3
 Sample filter: Binomial Number of points for filter: 9 Sample start region (min): 0 Sample end region (min): 60
 Manual baseline start (min): 18 Manual baseline end (min): 59
 Marker peak width (sec): 6 Marker min peak height: 100 Marker baseline V to V?: Y Marker baseline V to V points: 3
 Lower marker selection: First peak > 100 RFU Upper marker selection: Last peak > 100 RFU
 Ladder size (nt) 15, 200, 500, 1000, 1500, 2000, 3000, 4000, 6000
 Quantification using: Ladder Final concentration (ng/uL): 8.0000 Dilution factor: 12.0
 Minimum RFU for data processing: 2

Sample: SampC12
Well location: C12
Created: Tuesday, October 19, 2021 2:38:10 PM



Peak	Size (nt)	Concentration (ng/uL)	From (nt)	To (nt)	RFU
1	15 (LM)	0.6807	0	56	1858
2	485	1.2355	379	536	107
3	661	0.8495	536	700	68
4	805	1.1340	700	840	103
5	977	1.7371	840	1000	131
6	1121	1.3761	1000	1153	162
7	1247	1.4779	1153	1273	253
8	1342	2.3625	1273	1443	280
9	1885	9.2452	1443	2026	495
10	2322	7.4646	2026	2568	581
11	2926	9.1860	2568	3056	940
12	3260	6.5978	3056	3464	990
13	4070	67.1324	3464	5816	11100

TIC: 109.7985 ng/uL
 TIM: 130.3324 nmole/L
 Total: 111.0984 ng/uL
 concentration:

28s/18s: 64.7
 RQN: 10.0

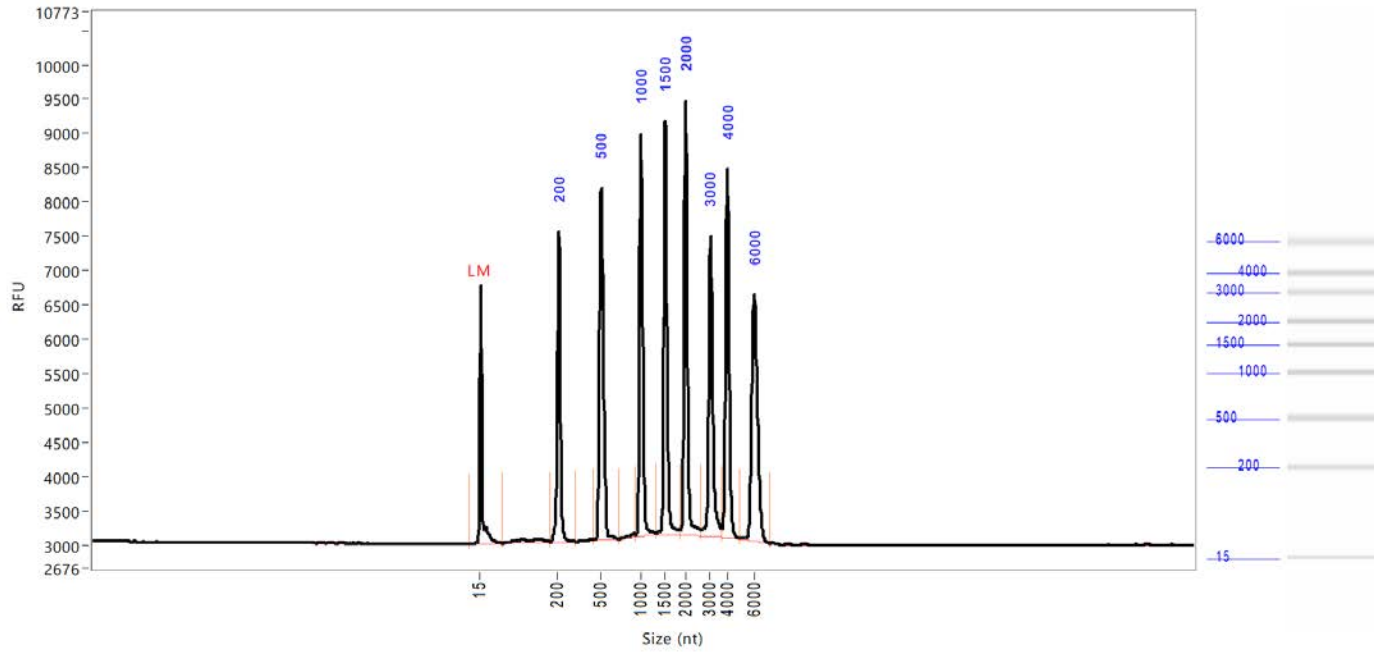
Smear Analysis 3700 nt to 4800 nt 62.4973 ng/ul 56.3 %Total 47.5870 nmole/L 4097 Avg. Size (nt) 4.37 %CV
 4800 nt to 13000 nt 2.4670 ng/ul 2.2 %Total 1.1534 nmole/L 6673 Avg. Size (nt) 25.91 %CV

Sample peak width (sec): 6 Sample min peak height: 50 Sample baseline V to V?: N Sample baseline V to V points: 3
 Sample filter: Binomial Number of points for filter: 9 Sample start region (min): 0 Sample end region (min): 60
 Manual baseline start (min): 18 Manual baseline end (min): 59
 Marker peak width (sec): 6 Marker min peak height: 100 Marker baseline V to V?: Y Marker baseline V to V points: 3
 Lower marker selection: First peak > 100 RFU Upper marker selection: Last peak > 100 RFU
 Ladder size (nt) 15, 200, 500, 1000, 1500, 2000, 3000, 4000, 6000
 Quantification using: Ladder Final concentration (ng/uL): 8.0000 Dilution factor: 12.0
 Minimum RFU for data processing: 2

Sample: SampD12

Well location: D12

Created: Tuesday, October 19, 2021 2:38:10 PM



Peak	Size (nt)	Concentration (ng/uL)	From (nt)	To (nt)	RFU
1	15 (LM)	0.6807	0	67	3751
2	200	10.8040	180	324	4515
3	500	14.8587	450	723	5127
4	1000	12.0923	938	1311	5854
5	1500	11.7948	1311	1869	6010
6	2000	12.8832	1869	2630	6320
7	3000	10.5857	2630	3648	4380
8	4000	11.3261	3648	4920	5371
9	6000	11.4536	4920	7137	3597

TIC: 95.7985 ng/uL
 TIM: 365.7284 nmole/L
 Total concentration: 96.0000 ng/uL

Sample peak width (sec): 6 Sample min peak height: 200 Sample baseline V to V?: Y Sample baseline V to V points: 3
 Sample filter: Binomial Number of points for filter: 9 Sample start region (min): 0 Sample end region (min): 60
 Marker peak width (sec): 6 Marker min peak height: 100 Marker baseline V to V?: Y Marker baseline V to V points: 3
 Lower marker selection: First peak > 100 RFU Upper marker selection: Last peak > 100 RFU
 Ladder size (nt) 15, 200, 500, 1000, 1500, 2000, 3000, 4000, 6000
 Quantification using: Ladder Final concentration (ng/uL): 8.0000 Dilution factor: 12.0
 Minimum RFU for data processing: 2

Sample: SampD12
Well location: D12
Created: Tuesday, October 19, 2021 2:38:10 PM
Fit type: Point to point

Calibration curve

